

Half ROD

The "Rounded" Flat Rod

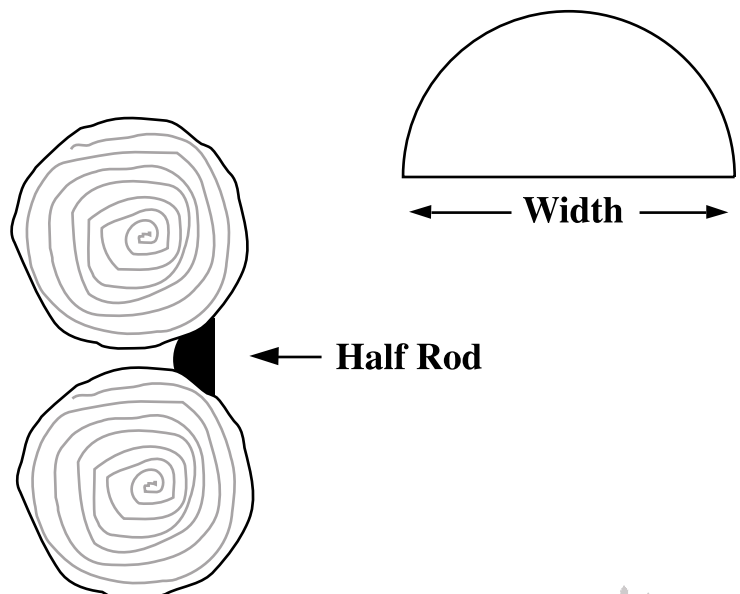
DESIGN

HALF ROD's unique design compresses securely into the joint while providing a flat chinking surface. **HALF ROD** is an open-cell product that eliminates foam outgassing.

ADVANTAGES

- Flat chinking surface eliminates rounded backer rod telegraphing
- Easier to install (softer, more pliable)
- Will compress more to fit a wider range of joint sizes (fewer sizes required for varying joint sizes.)
- Allows faster cure.

Availability	
Width	Total Qty.
7/8"	825 ft
1 1/8"	550 ft
1 1/2"	500 ft
2"	400 ft
The shaded sizes are available in sample packs.	



S A S H C O
Log Products for preserving your dream

10300 E. 107th Place • Brighton, CO 80601
 (303)286-7271 • Fax: (303)286-0400